



CLAUDE MONET'S HOUSE AND GARDENS

ACTIVITY BOOKLET

5/8 YEARS



This booklet belongs to:

I am years old

I visited Giverny on:



CLAUDE MONET MOVED TO GIVERNY IN 1883. FOR OVER 40 YEARS, THIS HOUSE AND ITS GARDENS WERE WHERE HE LIVED AND CREATED HIS ART PIECES. AFTER HE DIED, IT WAS BLANCHE MONET HOSCHÉDE WHO LOOKED AFTER THE HOUSE AND GARDENS. NOWADAYS, THE MONET FOUNDATION MANAGES THIS ENCHANTING PLACE...



WHO ARE YOU, MONET?!

Claude Monet was born in Paris in 1840. He grew up in Normandy and started painting at the age of 17. He enjoyed depicting landscapes, scenes of everyday life... and painting in the open air. In his pictures, he sought to capture the impression of the moment, the effects of light and colour, the variations a subject could have depending on what time of day and season it was. He painted small dabs of colour along others. These coloured "spots" blend in when you look at the canvas from afar!



NOW IT IS YOUR TURN TO PLAY!



Thanks to this booklet, discover Monet's house and gardens while having a fun time! Allow the frog to lead the way and find the answers to the questions featured in this booklet...

GAME 1

Enter the house and make your way to the living room-workshop. The paintings provide insight as to what Monet's favourite themes were. Among them, 4 paintings depict water lilies, called "nymphéas" (white water lilies) in French.

ONE OF THEM HAS AN ORIGINAL SHAPE. WHICH ONE?

CIRCLE THE RIGHT SHAPE!





A FAMILY HOME

In 1883, Monet came across the house in Giverny somewhat by chance when out on a walk. It was love at first sight! He moved in there with his second wife, Alice, and their eight children. Behind the pink façade and its green shutters lies an interior which was modern for its day. Monet soon set up

his workshop there. Alice looked after the house and the children divided their time between life in the open air and the many guests who came to visit them... The whole family felt comfortable in this lively and colourful house!



GAME 2

Claude Monet and his wife each had their own bedroom. In Monet's, you may admire the desk which is adorned with scores and musical instruments.

WHICH OF THESE INSTRUMENTS IS NOT TO BE FOUND?

- FLUTE
- VIOLIN
- PIANO

After touring the rest of the upstairs floor, go back down to explore the dining room. Back in Monet's day, painting furniture yellow was a very modern statement!

WHAT IS THE NAME OF THIS WORK HOKUSAI CREATED WHICH YOU CAN SEE ON ONE OF THE WALLS?



GUESS WHAT IT IS CALLED THANKS TO THIS CODE:

- = E ● = H ● = A
- = T ● = V ● = W



GAME 3



CRiKEY CROAKY!

Monet loved Japanese art, like many artists of the day. He collected prints and owned over 200 of them!



GAME 4

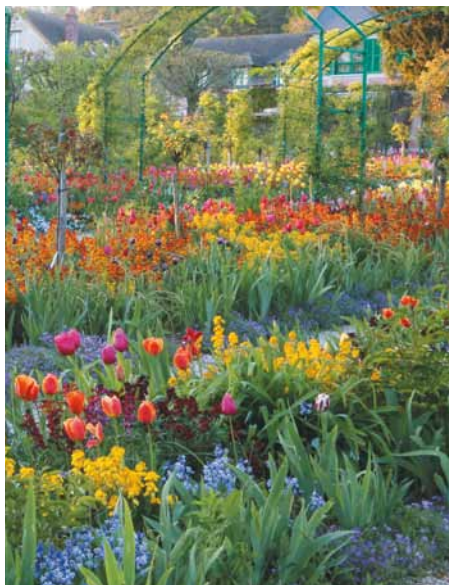
Step into the kitchen. Monet chose its blue colour, yet never set foot inside this room: it was the cook's territory!

HOW MANY PANS CAN YOU SEE HANGING ON THE WALL?

- 6 9 12

THE "CLOS NORMAND" GROUNDS

Monet was a gardening enthusiast and a flower lover. He used his knowledge as a painter to create perspectives, enhance the house's beauty and make use of shadows and light... On his grounds known as the "Clos Normand", he had most trees cut down to have them replaced by flowerbeds. Each bed featured one colour only. And when viewed as a whole, they called to mind a painter's palette!



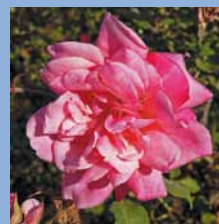
GAME 6

Depending on what season of the year you tour Monet's house, flowers in the garden will be different.

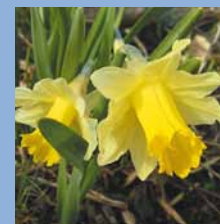
AMONG THESE PHOTOS, CIRCLE THE FLOWER(S) YOU CAN SEE.



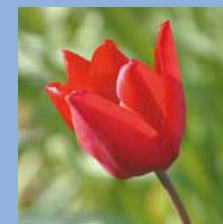
N-ST-RT--M



R _ S _

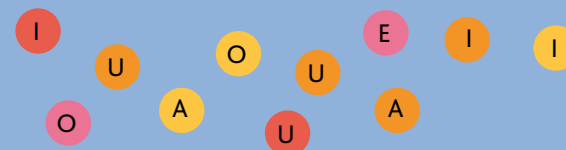


D-FF-D-L



T _ L _ P

PLACE THE RIGHT-COLOURED VOWELS IN THE RIGHT POSITION TO FIND OUT THEIR NAME(S).



crikey CROAKY!

Nowadays, the gardener draws inspiration from Monet's paintings to arrange light and colour effects within the garden.

Find where the underground passage is to get to the water garden!

TO YOUR MIND, THIS PASSAGE ENABLES YOU TO GO UNDER:

- a RAILWAY LINE
- a RIVER
- a ROAD

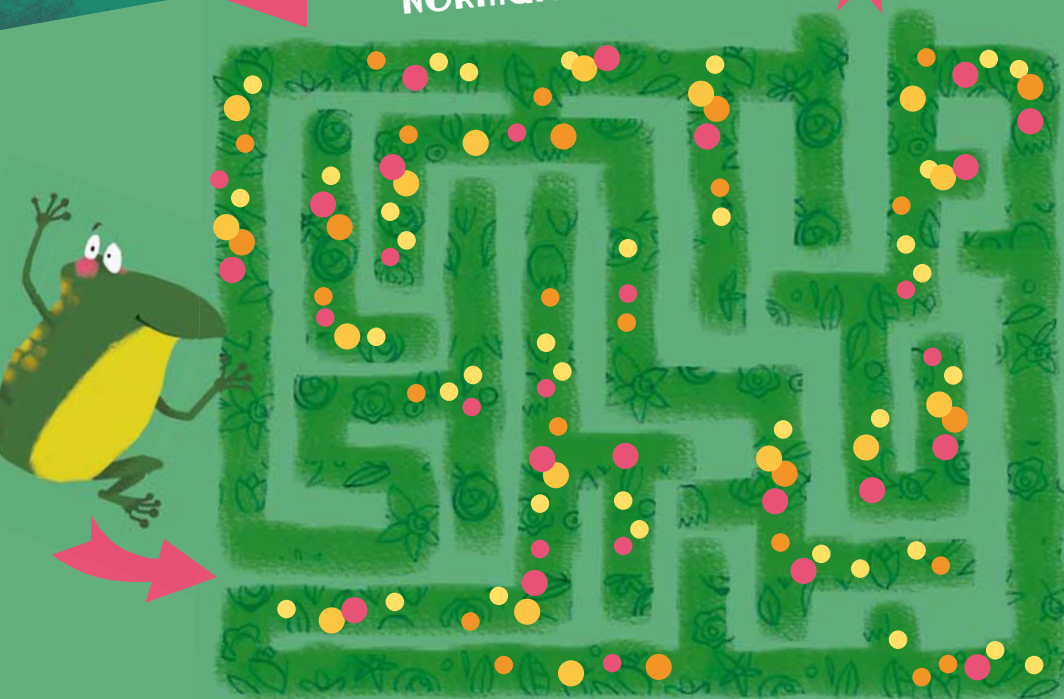
GAME 7

CLUE: PRICK UP YOUR EARS!



GAME 5

HELP THE FROG FIND ITS WAY OUT OF THE "CLOS NORMAND" GROUNDS!





THE WATER GARDEN
 Monet was fascinated by the effects light and reflections could have on water. In 1893, he purchased a plot of land at the back of the "Clos Normand" grounds, across the railway line. There he designed a "water garden", with a pond and a Japanese bridge. At the bottom of the pond, he planted white water lilies. He enjoyed entertaining his guests in this garden and spent hours contemplating... and painting it!

GAME 8



CRICKET CROAKY!
 To distinguish it from the red which was traditionally used in Japan, Monet painted his Japanese bridge green!

SPOT THE 5 DIFFERENCES THERE ARE BETWEEN THE BRIDGE AND ITS REFLECTION IN THE WATER!



WHICH ANIMAL ARE YOU UNLIKELY TO SEE IN THE POND?



DECIPHER THIS REBUS TO FIND OUT!

GAME 9

GAME 10

EACH OF THESE PHOTOS DEPICTING THE BRIDGE WAS TAKEN DURING A DIFFERENT SEASON. CONNECT EACH PHOTO TO THE RIGHT SEASON!



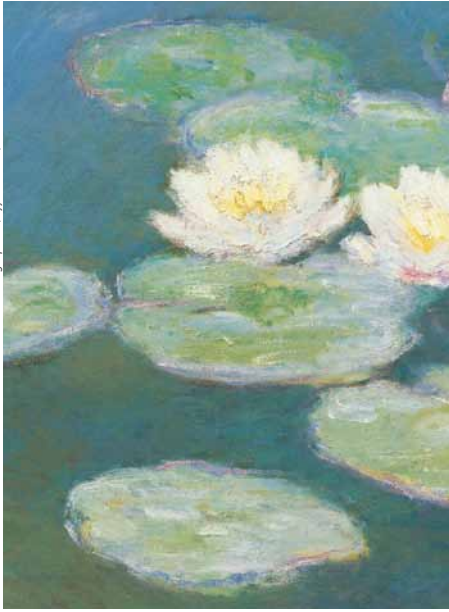
SPRING

SUMMER

AUTUMN

WINTER





THE WATER LILY WORKSHOP

Nowadays it accommodates the gift shop, but back in Monet's day, it was the third workshop he set up in his house at Giverny. This workshop was very spacious: 49 feet high, 75 feet long and 39 feet wide. These measurements enabled Monet to paint pictures of an unusual size. This was where he painted his *Water Lilies* on large panels which were attached to the walls. When placed alongside each other, they formed a 305-foot long décor!

GAME 11

Walk through the underground passage once again to go back to the "clos normand" grounds.

AMONG ALL THESE FLOWERS SURROUNDING YOU, DRAW YOUR FAVOURITE ONE HERE.



WHICH ANIMALS HAVE TAKEN UP RESIDENCE IN THE GARDEN?

GAME 12

WALK TO THE FAR END OF THE "CLOS NORMAND" GROUNDS AND THEN BACK UP TO THE WATER LILY WORKSHOP TO FIND OUT!

GAME 13

In the Water Lily workshop, you can see copies of pictures Monet painted here.

REASSEMBLE THIS PICTURE BY CONNECTING EACH PIECE TO ITS CORRECT POSITION ON THE PUZZLE.

1

2

3

4

5

6

YOU MAY USE "THE ORIGINAL" WORK THAT CAN BE SEEN ON THE WORKSHOP WALL FOR GUIDANCE!

CRIKEY CROAKY!

Nowadays, some of the Water Lily pictures Monet painted inside this workshop are on display in the "Musée Marmottan" and "Musée de l'Orangerie", in Paris.

Games answers

1 Circle. 2 Piano.

3 The Wave. 4 12.



6 Nasturtium; rose; daffodil; tulip

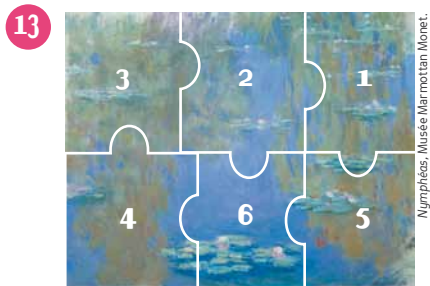
7 A road.



9 Crocodile (k'-rock-o-dial).

10 Spring: 4; summer: 3;
autumn: 1; winter: 2.

12 Hens!



Designed and published by: www.lapetiteboite-communication.fr. Illustrator : G. Queval. Translator: Camilla Jones. Photos © Diäconer/Fondation Claude Monet, Giverny - All rights reserved.

see YOU soon!

Fondation Claude Monet

84, rue Claude Monet - 27620 Giverny
+33 (0)2 32 51 28 21

www.claude-monet-giverny.fr

Open daily from the last week-end of March to November 1st, from 9.30 a.m. to 6 p.m. (last admission 5.30 p.m.)

